

Cotrending: testing for common deterministic trends in varying means model ^{*†‡}

Marie-Christine Düker
Ruhr-Universität Bochum

Vladas Pipiras
University of North Carolina

Raanju R. Sundararajan
Southern Methodist University
King Abdullah University of Science and Technology

May 13, 2019

Abstract

In a varying means model, the temporary evolution of a p -vector system is determined by p deterministic nonparametric functions superimposed by error terms, possibly dependent cross sectionally. The basic interest is in linear combinations across the p dimensions that make the deterministic functions constant over time. The number of such linearly independent linear combinations is referred to as a cotrending dimension, and their spanned space as a cotrending space. This work puts forward a framework to test statistically for cotrending dimension and space. Connections to principal component analysis and cointegration are also considered. Finally, a simulation study to assess the finite-sample performance of the proposed tests, and applications to several real data sets are also provided.

1 Introduction

The topic and the results of this work can be viewed from several interesting angles. We shall first describe the problem in more technical terms and then discuss its connections to other lines of investigation. We are interested here in a statistical model of the form

$$X_t = \mu\left(\frac{t}{T}\right) + Y_t, \quad t = 1, \dots, T. \quad (1.1)$$

Here, t is thought as time, the observations X_t are p -vectors, $\mu : [0, 1] \rightarrow \mathbb{R}^p$ is a p -vector deterministic function with component functions $(\mu_1(u), \dots, \mu_p(u))'$ and Y_t are p -vector i.i.d. error terms with $E Y_t = 0$. We shall further assume that the covariance matrix of the error terms $E Y_t Y_t'$ may vary with time, and also treat the simpler special case when it does not, that is, $E Y_t Y_t' = \Sigma$, separately – the reader may have this case in mind for the rest of this section. We think of (1.1) as modeling

^{*}AMS subject classification. Primary: 62M10. Secondary: 62G10. JEL Classification: C12, C32.

[†]Keywords and phrases: varying means, cotrending dimension and space, matrix rank and nullity, asymptotic normality, testing, principal component analysis, cointegration.

[‡]This work was carried out during a stay of the first author in the Department of Statistics and Operation Research at the University of North Carolina, Chapel Hill. The first author thanks the department for its hospitality, and also the DFG (RTG 2131) for financial support. The second author was supported in part by the NSF grant DMS-1712966.

varying means across p dimensions and shall refer to (1.1) as a *varying means* or *VM model*. The mean vector function $\mu(u)$ is nonparametric and will be assumed to be piecewise continuous. The focus here is on the “fixed p , large T ” asymptotics.

The question we ask here for the VM model is whether there are (linearly independent) linear combinations of the components of X_t that are stationary across time t at the mean level. That is, we look for a $p \times d_1$ matrix B_1 with linearly independent columns (which are not identically zero) such that $E B_1' X_t = B_1' \mu(t/T) \equiv \mu_1$ for a constant $d_1 \times 1$ vector μ_1 or, at the model level,

$$B_1' \mu(u) = \mu_1, \quad u \in (0, 1]. \quad (1.2)$$

Definition 1.1. The largest d_1 for which (1.2) holds is called the *cotrending dimension* of the corresponding *cotrending subspace* \mathcal{B}_1 , spanned by the columns of B_1 . Similarly, $d_2 = p - d_1$ is called the *noncotrending dimension* of the corresponding *noncotrending subspace* \mathcal{B}_2 , with $\mathcal{B}_2 \perp \mathcal{B}_1$.

The dimension d_2 indicates how many non-constant deterministic functions drive the system (1.1). We are interested here in inference about d_1 (and hence d_2), and that of the corresponding subspace.

To make inference about d_1 and d_2 , we relate (1.2) to a problem involving matrix nullity (the number of zero eigenvalues) and rank. The matrix in question is defined based on the following observation. Under mild assumptions on μ (see Section 3 below), the relation (1.2) is equivalent to

$$B_1' M B_1 = 0, \quad (1.3)$$

where

$$M = \int_0^1 (\mu(u) - \bar{\mu})(\mu(u) - \bar{\mu})' du \quad \text{with} \quad \bar{\mu} = \int_0^1 \mu(u) du. \quad (1.4)$$

The matrix M is positive semidefinite. Then, according to (1.3),

$$d_1 = \text{nl}\{M\}, \quad d_2 = \text{rk}\{M\}, \quad (1.5)$$

where $\text{nl}\{M\}$ and $\text{rk}\{M\}$ denote the nullity and the rank of the matrix M . Inference about d_1, d_2 is then that about the nullity or the rank of the matrix M . Similarly, the cotrending subspace \mathcal{B}_1 is spanned by the eigenvectors associated with the zero eigenvalues of M .

A number of tests are available for the rank of a matrix, given an asymptotically normal estimator \widehat{M} of M , especially in the econometrics literature (Gill and Lewbel (1992), Cragg and Donald (1996), Kleibergen and Paap (2006), Robin and Smith (2000)), and slightly less so in the statistics literature (Anderson (1951), Eaton and Tyler (1991), Camba-Mendez and Kapetanios (2001)). Furthermore, there are technical reasons for \widehat{M} to be nondefinite, when M is positive semidefinite itself, as it is the case here (Donald et al. (2007) and Section 3 below). Much of the technical contribution of this work consists of introducing such an estimator for M in (1.4), proving its asymptotic normality result and then applying the available matrix rank tests. We shall also discuss what can be said about the convergence of the sample eigenvectors corresponding to the cotrending subspace \mathcal{B}_1 . Another less technical contribution is to relate the considered problem to a number of other lines of work, as outlined next and investigated in greater depth below.

The problem described above is related to stationary subspace analysis (SSA), which was one motivating starting point. In SSA, one similarly seeks linear combinations of vector observations collected over time that are stationary, possibly not just at the mean but also the covariance level. The SSA was introduced by Von Bünau et al. (2009), and studied further by Blythe et al. (2012), Sundararajan and Pourahmadi (2018). In the work somewhat parallel to this (Sundararajan et al. (2019)), we use similarly matrix constructs and their eigenstructure to study the SSA at the

covariance level, supposing the mean is zero, though the overall approach turns out to be much more involved than the one presented here.

This work, probably unsurprisingly to the reader, also has connections to principal component analysis (PCA). Two aspects of this connection should be highlighted here and kept in mind. Unlike in the standard PCA, to estimate M in (1.4), we shall *not* work with the sample covariance matrix of the data but rather effectively with the autocovariance matrix at lag 1. Using such covariance matrices in PCA though is not completely new; see e.g. Lam and Yao (2012). Furthermore, from the PCA perspective, this work provides a new framework where the number of principal components can be tested for in a theoretically justified approach.

Lastly, we shall also draw connections to cointegration. Cointegration is a, if not the, approach of choice in modern time series analysis that also seeks linear combination of nonstationary time series that are stationary. Nonstationarity though is understood in the form of random walks, whereas the formulation (1.1) takes the view of deterministic trends. Similar time series realizations are nevertheless expected to be captured by either formulation. In our real data applications, we shall also contrast our approach to cointegration. The term ‘‘cotrending’’ used in this work is inspired by ‘‘cointegrating’’. While ‘‘integrated’’ refers to random walks, ‘‘trended’’ alludes here to deterministic trends.

The rest of the paper is organized as follows. In Section 2, we introduce an estimator of M in (1.4) and state its asymptotic normality results, whose proofs can be found in Appendix A. The application of some of the available matrix rank tests is discussed in Section 3. Section 4 concerns inference of the cotrending subspace \mathcal{B}_1 . Section 5 details connections to PCA and cointegration. A simulation study and applications are considered in Sections 6 and 7. Section 8 concludes.

2 Matrix estimator and its asymptotic normality

We introduce here an asymptotically normal estimator \widehat{M}_S for M in (1.4) and a consistent estimator for its limiting covariance matrix. As noted in the introduction, we shall allow the covariance matrix of the error terms Y_t in the VM model (1.1) to vary with time. More specifically, we set $Y_t = \sigma(t/T)Z_t$ with i.i.d. vectors Z_t satisfying $E Z_t = 0$, $E Z_t Z_t' = I_p$, so that the VM model (1.1) becomes

$$X_t = \mu\left(\frac{t}{T}\right) + \sigma\left(\frac{t}{T}\right)Z_t, \quad t = 1, \dots, T, \quad (2.1)$$

where $\sigma : [0, 1] \rightarrow \mathbb{R}^{p \times p}$. In order to use the available matrix rank tests, we seek a symmetric estimator $\widehat{M}_S = \widehat{M}_S(T)$ of M such that

$$\sqrt{T} \text{vech}(\widehat{M}_S - M) \xrightarrow{d} \mathcal{N}(0, C). \quad (2.2)$$

Furthermore, we need a consistent estimator $\widehat{C} = \widehat{C}(T)$ for the resulting covariance matrix C , that is, $\widehat{C} \xrightarrow{P} C$. Throughout this work, \xrightarrow{d} and \xrightarrow{P} stand for the convergence in distribution and probability, respectively. For a matrix (or vector) A , we also set $A^2 = AA'$.

By Proposition 2.1 in Donald et al. (2007), a positive semidefinite estimator \widehat{M} of M satisfying (2.2) would necessarily have a singular limiting covariance matrix C . Most asymptotically valid and ‘‘nondegenerate’’ matrix rank tests found in the literature assume that C is nonsingular. Nonsingularity can often be achieved by working with an estimator of M which is nondefinite. For this reason, as an estimator of M , we suggest the symmetrized sample autocovariance matrix at lag 1 given by

$$\widehat{M}_S = \frac{1}{2}(\widehat{M} + \widehat{M}') \quad (2.3)$$

with

$$\widehat{M} = \frac{1}{T} \sum_{t=1}^{T-1} (X_t - \bar{X}_T)(X_{t+1} - \bar{X}_T)' \quad \text{and} \quad \bar{X}_T = \frac{1}{T} \sum_{t=1}^T X_t. \quad (2.4)$$

(See also Remark 2.1 for some insight into (2.3).) The following proposition formulates the asymptotic normality result for \widehat{M}_S . The matrix $D_p^+ = (D_p' D_p)^{-1} D_p'$ appearing below is the Moore-Penrose inverse of the duplication matrix D_p , and is known as the elimination matrix; see Magnus and Neudecker (1999). We call a function on $[0, 1]$ piecewise continuous if $[0, 1]$ can be partitioned into a finite union of subintervals where the function is continuous, has left and right limits at the subinterval endpoints, and is also right-continuous.

Proposition 2.1. *Let X_t follow the model (2.1) with piecewise continuous μ, σ^2 and i.i.d. Z_t satisfying $E Z_t = 0$, $E Z_t Z_t' = I_p$ and $E \|Z_t\|^{2+\delta} < \infty$ for some $\delta > 0$. Then, the estimator \widehat{M}_S of M satisfies (2.2) with the limiting covariance matrix*

$$C = D_p^+ \left(\int_0^1 \sigma^2(u) \otimes \sigma^2(u) du + 4 \int_0^1 (\mu(u) - \bar{\mu})(\mu(u) - \bar{\mu})' \otimes \sigma^2(u) du \right) D_p^{+'}. \quad (2.5)$$

The proof of Proposition 2.1 can be found in Appendix A. The following corollary formulates the result when $\sigma^2(u) \equiv \Sigma$ does not depend on u .

Corollary 2.1. *When $\sigma^2(u) \equiv \Sigma$, Proposition 2.1 holds with the limiting covariance matrix*

$$C = D_p^+ ((\Sigma \otimes \Sigma) + 4(M \otimes \Sigma)) D_p^{+'}. \quad (2.6)$$

Remark 2.1. The intuition behind the estimator \widehat{M}_S in (2.3) is quite simple. Replacing \bar{X}_T by $\bar{\mu}$ for simplicity, note that

$$E \left(\frac{1}{T} \sum_{t=1}^{T-1} (X_t - \bar{\mu})(X_{t+1} - \bar{\mu})' \right) = \frac{1}{T} \sum_{t=1}^{T-1} \left(\mu\left(\frac{t}{T}\right) - \bar{\mu} \right) \left(\mu\left(\frac{t+1}{T}\right) - \bar{\mu} \right)',$$

where we used the fact that $E Z_t Z_{t+1}' = 0$. The latter expression approximates M for piecewise continuous μ .

The following proposition gives a consistent estimator for the limiting covariance matrix C in (2.5) and (2.6). It is proved in Appendix A.

Proposition 2.2. *Under the assumptions of Proposition 2.1, the estimator*

$$\widehat{C} = D_p^+ \frac{1}{T} \sum_{t=1}^{T-3} \left(\frac{1}{4} (\Delta X_{t+1})^2 \otimes (\Delta X_{t+3})^2 + 2((\Delta X_{t+3})^2 \otimes (X_t - \bar{X}_T)(X_{t+1} - \bar{X}_T)') \right) D_p^{+'} \quad (2.7)$$

with $\Delta X_t = X_t - X_{t-1}$, is an asymptotically unbiased and consistent estimator for C in (2.5).

The following corollary gives a simpler estimator for the limiting covariance matrix in Corollary 2.1.

Corollary 2.2. *Under the assumptions of Proposition 2.1 and when $\sigma^2(u) \equiv \Sigma$, the estimator*

$$\widehat{C} = D_p^+ ((\widehat{\Sigma} \otimes \widehat{\Sigma}) + 4(\widehat{M}_S \otimes \widehat{\Sigma})) D_p^{+'} \quad \text{with} \quad \widehat{\Sigma} = \frac{1}{T} \sum_{t=1}^{T-1} (\Delta X_{t+1})^2$$

with \widehat{M}_S as in (2.4), is an asymptotically unbiased and consistent estimator for C in (2.6).

As noted above, we want to have nonsingular limiting covariance matrix C of the estimator \widehat{M}_S to ensure the applicability of available matrix rank tests. This motivated the choice of a nondefinite estimator \widehat{M}_S , yielding the limiting covariance matrix C in (2.5). Since $(\mu(u) - \bar{\mu})(\mu(u) - \bar{\mu})'$ in (2.5) might be nondefinite, nonsingularity can be achieved through $\int_0^1 \sigma^2(u) \otimes \sigma^2(u) du$. For this reason, we require hereafter $\sigma^2(u)$ to be nonsingular for all $u \in (0, 1]$.

3 Inference of (non)cotrending dimension

In this section, we give more details about the application of available matrix rank tests to infer $\text{rk}\{M\}$ (or $\text{nl}\{M\}$) having a matrix estimator \widehat{M}_S satisfying (2.2). We start by justifying the statements in (1.5).

Lemma 3.1. *Suppose that μ is piecewise continuous and let d_1, d_2 be the cotrending and non-cotrending dimensions defined for μ in Section 1. Then, the relations (1.5) hold.*

Proof: The cotrending and noncotrending dimensions d_1, d_2 are defined in terms of the relation (1.2). Since $\mu_1 = B_1' \bar{\mu}$, (1.2) can be written as

$$B_1'(\mu(u) - \bar{\mu}) = 0,$$

which implies (1.3). The converse is a consequence of writing (1.3) as

$$\int_0^1 (x' B_1'(\mu(u) - \bar{\mu}))^2 du = 0$$

for any $x \in \mathbb{R}^{d_1}$. This implies that $x' B_1'(\mu(u) - \bar{\mu}) = 0$ a.e. du , for all x . By Fubini's theorem, $x' B_1'(\mu(u) - \bar{\mu}) = 0$ a.e. $dx du$ and because of continuity in x , $x' B_1'(\mu(u) - \bar{\mu}) = 0$ for all x , a.e. du . The latter implies that $B_1'(\mu(u) - \bar{\mu}) = 0$ a.e. du . Since μ is piecewise continuous, we also have $B_1'(\mu(u) - \bar{\mu}) = 0$ for all u , which implies (1.2). \square

To test for the rank of the matrix M , we use the so-called SVD matrix rank test proposed by Kleibergen and Paap (2006), and more precisely, its analogue for symmetric matrices found in Donald et al. (2007). The test has some advantages over other matrix rank tests, for example, the limiting covariance matrix C in (2.2) is not required to have a Kronecker product structure. Consider the following hypothesis testing problem,

$$H_0 : \text{rk}\{M\} = r \quad \text{vs.} \quad H_1 : \text{rk}\{M\} > r, \quad (3.1)$$

where $r = 0, \dots, p-1$ is fixed. The SVD matrix rank test is based on the singular value decomposition of M as

$$M = U S U' = \begin{pmatrix} U_{11} & U_{12} \\ U_{21} & U_{22} \end{pmatrix} \begin{pmatrix} S_1 & 0 \\ 0 & S_2 \end{pmatrix} \begin{pmatrix} U'_{11} & U'_{21} \\ U'_{12} & U'_{22} \end{pmatrix},$$

where U is orthogonal and the diagonal matrix S consists of the singular values of M in decreasing order. The matrices S_1 and U_{11} are of dimension $r \times r$ and the other matrices in the above partition have corresponding dimensions. Furthermore, as in Donald et al. (2007), M can be written as

$$M = A_r B_r + A_{r,\perp} \Lambda_r B_{r,\perp}$$

with

$$A_r = \begin{pmatrix} U_{11} \\ U_{21} \end{pmatrix} S_1 U'_{11}, \quad B_r = (I_r \quad (U'_{11})^{-1} U_{21}), \quad A_{r,\perp} = B'_{r,\perp} = \begin{pmatrix} U_{12} \\ U_{22} \end{pmatrix} U_{22}^{-1} (U_{22} U'_{22})^{\frac{1}{2}}$$

and

$$\Lambda_r = (U_{22}U'_{22})^{-\frac{1}{2}}U_{22}S_2U'_{22}(U_{22}U'_{22})^{-\frac{1}{2}}.$$

Then, the null hypothesis $H_0 : \text{rk}\{M\} = r$ is equivalent to $H_0 : \Lambda_r = 0$. In the SVD matrix rank test, the latter hypothesis is tested having the symmetric matrix estimator \widehat{M}_S in (2.3). Let $\widehat{\Lambda}_r$ be the quantity analogous to Λ_r but defined through \widehat{M}_S . By Proposition 2.1, the estimator \widehat{M}_S satisfies (2.2) with the limiting covariance matrix (2.5). Then, by Donald et al. (2007), Proposition 4.1, $\sqrt{T} \text{vech}(\widehat{\Lambda}_r) \xrightarrow{d} \mathcal{N}(0, \Omega_r)$ under the hypothesis $H_0 : \Lambda_r = 0$, where $\Omega_r = D_{p-r}^+(B_{r,\perp} \otimes A'_{r,\perp})D_p C D'_p (B'_{r,\perp} \otimes A_{r,\perp})D_{p-r}^{+'}$ and the matrix C is defined in (2.5). The suggested SVD test statistic is then

$$\widehat{\xi}_{svd}(r) = T \text{vech}(\widehat{\Lambda}_r)' \widehat{\Omega}_r^{-1} \text{vech}(\widehat{\Lambda}_r).$$

Here, $\widehat{\Omega}_r$ is defined by replacing the component matrices of Ω_r by their sample counterparts, including \widehat{C} defined by (2.7). By Theorem 4.1 in Donald et al. (2007), under $H_0 : \text{rk}\{M\} = r$ and if the matrix Ω_r is non-singular,

$$\widehat{\xi}_{svd}(r) \xrightarrow{d} \chi^2((p-r)(p-r+1)/2), \quad (3.2)$$

where $\chi^2(K)$ denotes the chi-square distribution with K degrees of freedom. Furthermore, Theorem 4.1 in Donald et al. (2007) gives $\widehat{\xi}_{svd}(r) \xrightarrow{P} \infty$ under $H_1 : \text{rk}\{M\} > r$.

The estimator of the matrix rank itself is defined as the first r , starting with $r = 0$, then $r = 1$ and so on till $r = p - 1$, for which the null hypothesis $H_0 : \text{rk}\{M\} = r$ is not rejected. By using the aforementioned asymptotic results, the resulting estimator can be shown to be consistent for $\text{rk}\{M\}$ in a standard way when the significance level suitably depends on the sample size.

4 Inference of (non)cotrending subspace

We are interested here in inference about the cotrending subspace \mathcal{B}_1 spanned by the columns of B_1 satisfying (1.2) and hence also about the noncotrending subspace \mathcal{B}_2 characterized by $\mathcal{B}_2 \perp \mathcal{B}_1$. The cotrending subspace is spanned by the eigenvectors of M in (1.4) associated with the zero eigenvalues. We shall establish a consistency result for the estimated eigenvectors when using \widehat{M}_S in (2.3) for M , and also discuss an available method to test whether a certain set of vectors lies in \mathcal{B}_1 .

Let $\lambda_1 \geq \dots \geq \lambda_{p-d_1} > \lambda_{p-d_1+1} = \dots = \lambda_p = 0$ and $\widehat{\lambda}_1 \geq \dots \geq \widehat{\lambda}_p$ denote the eigenvalues of the symmetric matrices M and \widehat{M}_S , respectively. Let also v_j and \widehat{v}_j be the corresponding orthonormal eigenvectors satisfying $Mv_j = \lambda_j v_j$ and $\widehat{M}_S \widehat{v}_j = \widehat{\lambda}_j \widehat{v}_j$. Furthermore, define the $p \times d$ matrices

$$V = (v_i, v_{i+1}, \dots, v_{i+d-1}) \quad \text{and} \quad \widehat{V} = (\widehat{v}_i, \widehat{v}_{i+1}, \dots, \widehat{v}_{i+d-1}). \quad (4.1)$$

Observe that $V = B_1$ when $i = p - d_1 + 1$ and $d = d_1$. The next result proves consistency of the eigenvectors in \widehat{V} . A short proof can be found in Appendix A and is based on the Davis-Kahan theorem.

Proposition 4.1. *Suppose $\min\{\lambda_{i-1} - \lambda_i, \lambda_{i+d-1} - \lambda_{i+d}\} > 0$, where $\lambda_0 := \infty$ and $\lambda_{p+1} := -\infty$. Then, there is an orthogonal matrix $\widehat{O} \in \mathbb{R}^{d \times d}$ such that*

$$\|\widehat{V}\widehat{O} - V\|_F = O_p\left(\frac{1}{\sqrt{T}}\right),$$

where \widehat{V} and V are as in (4.1).

The condition in the proposition is naturally satisfied for $i = p - d_1 + 1$ and $d = d_1$, yielding consistency of the estimated cotrending vectors $\widehat{V} = \widehat{B}_1$.

Suppose that \widehat{r} is the estimated rank of the matrix M following the proposed testing procedure in Section 3. Then, the estimated cotrending dimension $\widehat{d}_1 = p - \widehat{r}$ refers to the number of eigenvectors which generate the estimated cotrending subspace $\widehat{\mathcal{B}}_1$. We expect that $\widehat{d}_1 = d_1$ in the asymptotic sense and that in some situations, the respective estimated eigenvectors in $\widehat{\mathcal{B}}_1$ will have some of the entries close to zero, suggesting that the corresponding component series are not involved in cotrending relations. For this reason, one might be interested to test if the vectors that one gets by setting these small entries to zero are still part of the cotrending subspace. To test whether a certain set of vectors lies in the cotrending subspace \mathcal{B}_1 , we use a test proposed by Tyler (1981).

Let $\Lambda = (\lambda_i, \lambda_{i+1}, \dots, \lambda_{i+d-1})$ be the eigenvalues associated with the eigenvectors from V in (4.1). The total eigenprojection of M associated with Λ is defined as

$$P_0 = \sum_{\lambda \in \Lambda} P_\lambda \quad \text{with} \quad P_{\lambda_j} = v_j v_j'.$$

The total eigenprojection \widehat{P}_0 of \widehat{M}_S is defined analogously by replacing the eigenvalues and eigenvectors in Λ and V by their sample counterparts. Consider the hypothesis testing problem

$$H_0 : P_0 Q = Q \quad \text{vs.} \quad H_1 : P_0 Q \neq Q, \quad (4.2)$$

where Q denotes a $p \times q$ matrix with $\text{rk}\{Q\} = q \leq d$. In other words, we want to test if the columns of the matrix Q lie in the subspace generated by the eigenvectors of M in V associated with the eigenvalues $\lambda_i, \dots, \lambda_{i+d-1}$. When $i = p - d_1 + 1$ and $d = d_1$, H_0 states that the columns of Q are in \mathcal{B}_1 .

By Proposition 2.1, the estimator \widehat{M}_S satisfies (2.2) with a limiting covariance matrix C in (2.5). Using the relation $\text{vec}(M) = D_p \text{vech}(M)$, one may also infer that $\sqrt{T} \text{vec}(\widehat{M}_S - M) \xrightarrow{d} \mathcal{N}(0, D_p C D_p')$ holds, which coincides with the required assumptions in Tyler (1981). Furthermore, by Proposition 2.2, there is a consistent estimator \widehat{C} for C and C is nonsingular. Then, by Theorem 4.1 in Tyler (1981),

$$\text{vec}(\sqrt{T}(I_p - \widehat{P}_0)Q) \xrightarrow{d} \mathcal{N}(0, \Sigma_Q)$$

under the hypothesis $H_0 : P_0 Q = Q$, where

$$\Sigma_Q = (Q' \otimes I_p) R'_\Lambda D_p C D_p' R_\Lambda (Q \otimes I_p)$$

with C as in (2.5) and a $p^2 \times p^2$ matrix R_Λ defined as

$$R_\Lambda = \sum_{\lambda \in \Lambda} \sum_{\mu \notin \Lambda} \frac{1}{(\lambda - \mu)} P_\lambda \otimes P_\mu.$$

The suggested test statistic is then defined as

$$\widehat{\gamma}_{evd}(Q) = T(\text{vec}(Q))' \widehat{\Sigma}_Q^+ \text{vec}(Q),$$

where $\widehat{\Sigma}_Q^+$ denotes the Moore-Penrose inverse of $\widehat{\Sigma}_Q$. The matrix $\widehat{\Sigma}_Q$ is defined by replacing the component matrices of Σ_Q by their sample counterparts, i.e. R_Λ is written in terms of \widehat{V} and C is replaced by its consistent estimator \widehat{C} given in (2.7). Then, by Theorem 5.3 in Tyler (1981), under $H_0 : P_0 Q = Q$,

$$\widehat{\gamma}_{evd}(Q) \xrightarrow{d} \chi^2(q(p - d)).$$

As shown in Section 6 in Tyler (1981), based on the preceding test, one can define an asymptotic $100(1 - \alpha)\%$ confidence region as

$$\{\mathcal{Q} \mid Q \in \mathbb{R}^{p \times q}, \text{rk}\{Q\} = q, \hat{\gamma}_{evd}(Q) < \chi_{1-\alpha}^2(q(p-d))\}, \quad (4.3)$$

where $\chi_{1-\alpha}^2(K)$ denotes the $(1 - \alpha)$ -quantile of a chi-square distribution with K degrees of freedom, and $\mathcal{Q} = \{v \in \mathbb{R}^p \mid v = Qw \text{ for some } w \in \mathbb{R}^q\}$ is the subspace generated by Q . Since the matrix Σ_Q depends on the matrix Q one is testing for, it has to be recalculated for each Q . In fact, the confidence region in (4.3) can be expressed in terms of the estimated eigenvectors \hat{V} in (4.1) as

$$\{\mathcal{Q} \mid \hat{V}'Q = I_d \text{ and } T(\text{vec}(Q - \hat{V}))' \hat{\Sigma}_{\hat{V}}^+ \text{vec}(Q - \hat{V}) < \chi_{1-\alpha}^2(r(p-d))\}. \quad (4.4)$$

See Section 6 in Tyler (1981).

5 Connections to other approaches

We discuss here connections of the VM model and the introduced estimation framework to principal component analysis (PCA) (Section 5.1) and cointegration (Section 5.2).

5.1 Connections to PCA

It is instructive to contrast our model and approach to PCA. In PCA, one typically works with the sample covariance matrix

$$\hat{\Gamma} = \frac{1}{T} \sum_{t=1}^T (X_t - \bar{X}_T)(X_t - \bar{X}_T)',$$

which is the autocovariance function at lag 0, rather than this function at lag 1 as in (2.3) and (2.4). This has the following implications. For the VM model, we get by replacing \bar{X}_T by $\bar{\mu}$ for simplicity,

$$\begin{aligned} \mathbb{E} \hat{\Gamma} &= \mathbb{E} \left(\frac{1}{T} \sum_{t=1}^T (X_t - \bar{\mu})(X_t - \bar{\mu})' \right) \\ &= \frac{1}{T} \sum_{t=1}^T \left(\mu\left(\frac{t}{T}\right) - \bar{\mu} \right) \left(\mu\left(\frac{t}{T}\right) - \bar{\mu} \right)' + \frac{1}{T} \sum_{t=1}^T \sigma\left(\frac{t}{T}\right) \mathbb{E}(Z_t Z_t') \sigma\left(\frac{t}{T}\right)' \\ &= M + \int_0^1 \sigma^2(u) du + O\left(\frac{1}{T}\right), \end{aligned}$$

that is, $\hat{\Gamma}$ is not expected to be a consistent estimator for M . Another important difference between $\hat{\Gamma}$ and our estimator \widehat{M}_S , as noted above, is that $\hat{\Gamma}$ is positive semidefinite whereas \widehat{M}_S is nondefinite.

Vice versa, we also note that our estimator \widehat{M}_S would not be of much interest in the many PCA scenarios that work with independent copies of the vectors X_t (e.g. Jolliffe (1986)). Indeed, for such vectors, the estimator \widehat{M}_S based on the autocovariances at lag 1 would be zero asymptotically.

5.2 Connections to cointegration

In this section, we establish interesting connections of our approach to cointegration (Granger (1981), Engle and Granger (1987), Johansen (1991)). In cointegration, one similarly seeks linear

combinations of nonstationary time series that become stationary but this is for stochastic random walks (rather than deterministic trends) and with stationarity understood in a stronger sense (than just that at the mean level). We focus below on a popular class of vector error correction (VEC) models that allow for cointegration, and shall examine the behavior of our matrix estimator \widehat{M}_S for this class of models. The obtained results will shed light on how our approach and cointegration relate.

Suppose that a p -vector time series X_t , $t \in \mathbb{Z}$, follows a VAR(ℓ) model

$$X_t = \sum_{i=1}^{\ell} \Pi_i X_{t-i} + \varepsilon_t \quad (5.1)$$

with

$$E \varepsilon_0 = 0, \quad E \varepsilon_t \varepsilon_t' = \Sigma_\varepsilon, \quad E \varepsilon_t \varepsilon_s' = 0, \quad t \neq s. \quad (5.2)$$

It can be written in the form of a VEC model,

$$\Delta X_t = \Pi X_{t-1} + \sum_{i=1}^{\ell-1} \Gamma_i \Delta X_{t-i} + \varepsilon_t$$

with

$$\Pi = \Pi_1 + \cdots + \Pi_{\ell-1} - I_p, \quad \Gamma_i = -(\Pi_{i+1} + \cdots + \Pi_{\ell}). \quad (5.3)$$

Assume that X_t is at most integrated of order one, denoted as I(1), so that the first difference $\Delta X_t = X_t - X_{t-1}$ is stationary, denoted as I(0). In this setting, Engle and Granger (1987) defined the cointegrating rank in terms of the matrix Π in (5.3) as

$$r^* = \text{rk}\{\Pi\}. \quad (5.4)$$

The following three cases are distinguished. The case $r^* = p$ when Π has full rank, corresponds to a stationary VAR series X_t . When $r^* = 0$ or $\Pi = 0$, the VAR(ℓ) model reduces to a VAR($\ell - 1$) model in first differences. When $0 < r^* < p$, the series is said to be cointegrated of order r^* . In this case, the series has r^* linearly independent cointegrating relationships, that is, linearly independent vectors β_i , $i = 1, \dots, r^*$, such that $\beta_i' X_t$ is stationary. Furthermore, the matrix Π in (5.3) can be written as

$$\Pi = \alpha \beta' \quad (5.5)$$

with matrices α, β of dimension $p \times r^*$ and full rank. The matrix β consists of r^* linearly independent columns, the cointegrating vectors β_i . These vectors also form a basis for the cointegrating subspace.

Remark 5.1. Note the following curious difference between our cotrending approach and cointegration. While both cotrending dimension and cointegrating rank aim to measure similar quantities, the former is related to the nullity of a certain matrix in our approach whereas the latter is related to the rank of a matrix in cointegration. This has certainly been quite confusing to us, especially when comparing the two approaches, and should be kept in mind for the rest of this work. On the other hand, this disparity should perhaps not be surprising from the following observation: it is well known that the cointegrating rank is also the nullity of the spectral density matrix at the zero frequency of the differenced series ΔX_t (e.g. Hayashi (2011), Maddala and Kim (1999)).

To analyze our estimator in the context of cointegration, we need some technical assumptions. The so-called Granger representation, introduced in Johansen (1991), Theorem 4.1, enables one to separate the cointegrated process into stationary and nonstationary components. Define

$$C(z) = \Pi + \sum_{i=0}^{\ell} \Gamma_i (1-z) z^i,$$

where $\Gamma_0 = -I_p$. Let also $\alpha_\perp, \beta_\perp$ be the orthogonal complements of α, β in (5.5). Then, if $\det(C(z)) = 0$ has roots on or outside the unit circle and if the matrix

$$\alpha'_\perp \left(I_p - \sum_{i=1}^{\ell-1} \Gamma_i \right) \beta_\perp$$

is invertible, the time series X_t has the representation

$$X_t = L \sum_{i=1}^t \varepsilon_i + \sum_{j=0}^{\infty} \tilde{L}_j \varepsilon_{t-j} + \tilde{X}_0, \quad (5.6)$$

with $\{\varepsilon_t\}_{t \in \mathbb{Z}}$ as in (5.1) and \tilde{X}_0 as an initial value. Furthermore,

$$L = \beta_\perp \left(\alpha'_\perp \left(I_p - \sum_{i=1}^{\ell-1} \Gamma_i \right) \beta_\perp \right)^{-1} \alpha'_\perp \quad (5.7)$$

and the series $\sum_{j=0}^{\infty} \|\tilde{L}_j\|_F$ is finite, where $\|\cdot\|_F$ denotes the Frobenius norm. The first term in (5.6) is $I(1)$ and the second one is $I(0)$. The matrix L has rank $p - r^*$ and determines the number of noncointegrating stochastic random walks.

We suppose hereafter that the assumptions on the process to admit the Granger representation are satisfied. Furthermore, we decompose the matrix L into its non-zero and zero rows. Without loss of generality, we write $L = (L'_n, 0'_{p-n})'$, where the subscript n refers to the n non-zero rows, and $p - n$ to the $p - n$ zero rows. Similarly, decompose the identity matrix into its first n rows and the remaining $p - n$ rows as $I_{p \times p} = (I'_{1,n}, I'_{2,p-n})'$. The following result investigates the asymptotic behavior of the estimator \widehat{M}_S defined in (2.3) for a cointegrated system in (5.1). It is proved in Appendix A.

Proposition 5.1. *Suppose that X_t follows a VAR(ℓ) model (5.1) with cointegrating rank $0 \leq r^* \leq p$. Assume also that Σ_ε in (5.2) is positive definite and $E\|\varepsilon_0\|^4 < \infty$. Then, the symmetric estimator \widehat{M}_S in (2.3) satisfies*

$$\Delta_{2,T}^{-\frac{1}{2}} \widehat{M}_S \Delta_{2,T}^{-\frac{1}{2}} \xrightarrow{d} \begin{pmatrix} L_n \Sigma_\varepsilon^{\frac{1}{2}} Z \Sigma_\varepsilon^{\frac{1}{2}} L'_n & 0 \\ 0 & \frac{1}{2} (\Upsilon_{p-n}(1) + \Upsilon'_{p-n}(1)) \end{pmatrix}, \quad (5.8)$$

where $\Delta_{2,T} = \text{diag}(T I_n, I_{p-n})$, $\Upsilon_{p-n}(1) = I_{2,p-n} \sum_{j=0}^{\infty} \tilde{L}_j \tilde{L}'_{j+1} I'_{2,p-n}$, and

$$Z = \int_0^1 (Z(u) - \bar{Z})(Z(u) - \bar{Z})' du \quad \text{with} \quad \bar{Z} = \int_0^1 Z(u) du, \quad (5.9)$$

and a p -vector standard Brownian motion $\{Z(t)\}_{t \in [0,1]}$.

By construction, $\text{rk}\{L_n\} = \text{rk}\{L\} = p - r^*$. For this reason and since Z in (5.9) and $\Sigma_\varepsilon^{\frac{1}{2}}$ are positive definite,

$$\text{rk}\{L_n \Sigma_\varepsilon^{\frac{1}{2}} Z \Sigma_\varepsilon^{\frac{1}{2}} L'_n\} = \text{rk}\{L_n\} = p - r^*.$$

Then,

$$\text{rk} \left\{ \begin{pmatrix} L_n \Sigma_\varepsilon^{\frac{1}{2}} Z \Sigma_\varepsilon^{\frac{1}{2}} L'_n & 0 \\ 0 & \frac{1}{2} (\Upsilon_{p-n}(1) + \Upsilon'_{p-n}(1)) \end{pmatrix} \right\} \geq p - r^*.$$

In general, this suggests that testing for nullity with \widehat{M}_S in the cotrending approach will yield estimates smaller than the true cointegrating rank. However, when the matrix L is assumed to have only non-zero rows, the convergence result (5.8) for \widehat{M}_S reduces to

$$\frac{1}{T}\widehat{M}_S \xrightarrow{d} L\Sigma_\varepsilon^{\frac{1}{2}}Z\Sigma_\varepsilon^{\frac{1}{2}}L'.$$

Then, the corresponding rank is given by

$$\text{rk}\{L\Sigma_\varepsilon^{\frac{1}{2}}Z\Sigma_\varepsilon^{\frac{1}{2}}L'\} = \text{rk}\{L\} = p - r^*,$$

that is, the cotrending approach will tend to produce the same estimates as the cointegrating rank. In practice, one can ensure this condition on L by multiplying the $\text{VAR}(\ell)$ model with a random matrix $R \in \mathbb{R}^{p \times p}$ with full rank, since $\text{rk}\{RL\} = \text{rk}\{L\}$. As long as L is “not too sparse,” this ensures that the matrix RL has only non-zero rows.

While the above discussion (and subsequent numerical results) argues that the cotrending approach will tend to give the cointegrating rank for cointegrated system, the converse is not necessarily expected as we illustrate in Section 6 below. We also note that the discussion above also holds for $r^* = 0$, that is, the situation associated with a spurious regression of independent random walks. Thus, in this case, the cotrending approach will tend to estimate the cotrending dimension $r^* = 0$ as well.

6 Simulation study

We use here Monte Carlo simulations to assess the performance of our cotrending test and to compare it to a cointegrating test. For the cotrending test, we formulate the hypothesis testing problem (3.1) as

$$H_0 : d_1 = d \quad \text{vs.} \quad H_1 : d_1 < d,$$

where $d = 1, \dots, p$. The sequential testing here starts with $d = p$, then $d = p - 1$ and so on, till the null hypothesis is not rejected. To test for the cointegrating rank r^* in (5.4), we apply the widely used Johansen test (Johansen (1991)). The corresponding hypothesis testing problem can be written as

$$H_0 : r^* = r \quad \text{vs.} \quad H_1 : r^* > r,$$

where $r = 0, \dots, p - 1$. The sequential testing is carried out for $r = 0, r = 1$, etc. We present the simulation results in PP-plots as follows. Due to the different hypothesis testing problems, we present $p + 1$ plots for different values $d = 1, \dots, p$ and $r = 0, \dots, p - 1$. The probability $\alpha \in (0, 1)$ on the vertical axis is plotted versus $p_l(\alpha) = \text{P}(\widehat{\xi}(l) > q_l(\alpha))$, $l = d, r$ on the horizontal axis. The values $q_l(\alpha)$ are such that $\text{P}(\widehat{\xi}(l) > q_l(\alpha)) = \alpha$. The respective test statistic $\widehat{\xi}(l)$ either coincides with $\widehat{\xi}_{svd}(l)$ in (3.2) or the Johansen test statistic. The probability $p_l(\alpha)$ is estimated with 500 Monte Carlo replications of the corresponding test statistics. The critical values for the Johansen test are approximated as proposed in Johansen (1988), p. 239.

As the first numerical example, we consider X_t from the VM model (1.1) with $p = 5$, $T = 500$ and

$$\mu(u) = (0, 7, 14, \sin(7u), \sin(7(u + 0.2)))'. \tag{6.1}$$

The errors Y_t are multivariate Gaussian i.i.d. with $\text{E}Y_tY_t' = I_5$. The true cotrending dimension for (6.1) is $d_1 = 3$. Observe from Figure 1 that the Johansen test rejects the considered hypotheses all the time, thus settling on $r^* = p = 5$ and suggesting that the series is stationary. The cotrending

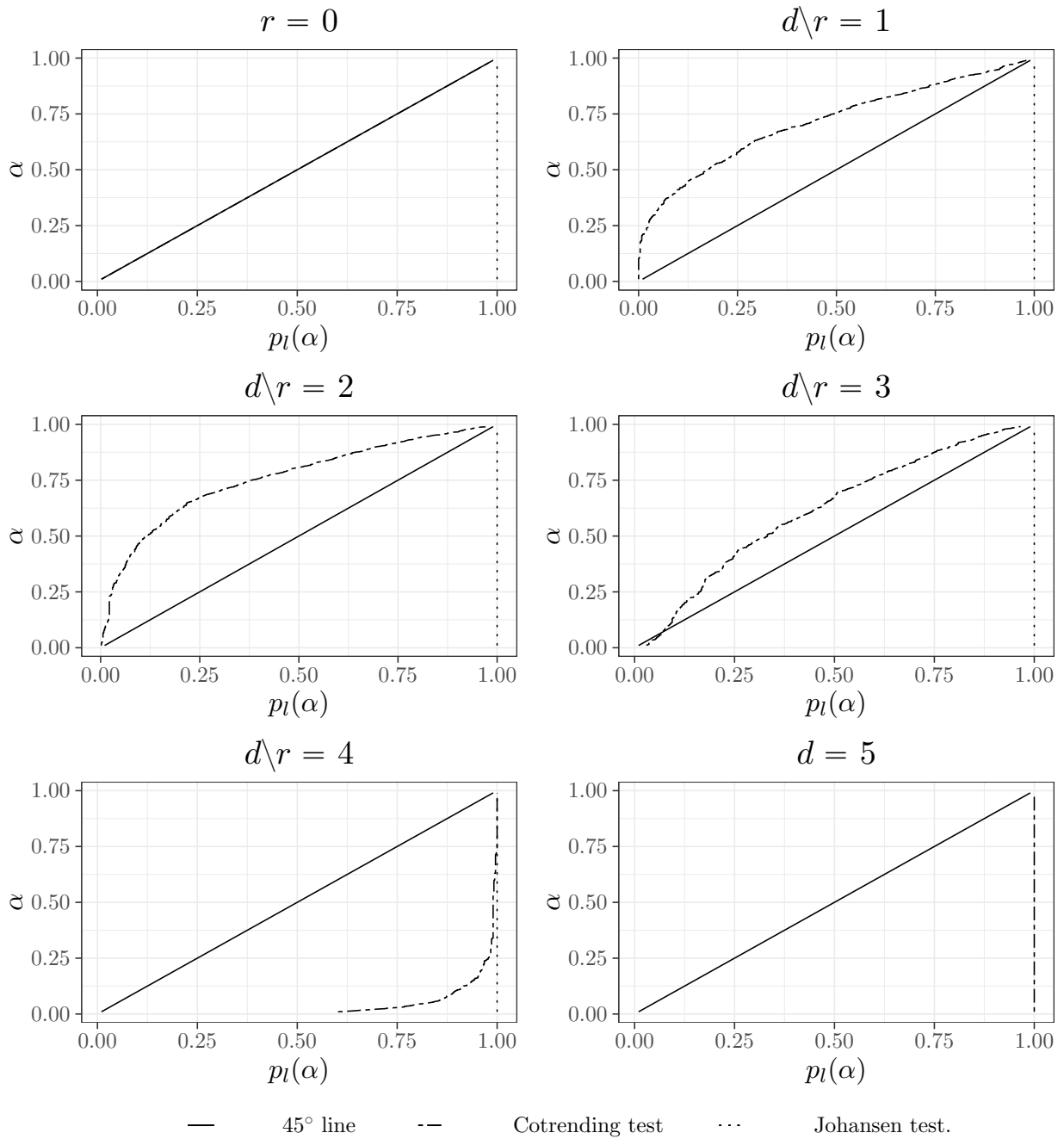


Figure 1: PP-plots for a simulated VM model with true cotrending dimension $d_1 = 3$.

test rejects the hypothesis for $d_1 = 4, 5$ and detects the cotrending dimension $d_1 = 3$ with the size matching the nominal value quite well, since dashed line lies close to the 45° line for smaller α .

For a second example, we simulate a three dimensional VAR(2) model with true cointegrating rank $r^* = 2$ and sample size $T = 500$. The model in (5.1) reduces to

$$Y_t = \Pi_1 Y_{t-1} + \Pi_2 Y_{t-2} + \varepsilon_t. \quad (6.2)$$

The series ε_t is simulated as a multivariate Gaussian i.i.d. series and the coefficient matrices are chosen as

$$\Pi_1 = \begin{pmatrix} 0.5 & 0.2 & 0 \\ -0.2 & -0.5 & 0.7 \\ 0.3 & 0 & -0.1 \end{pmatrix}, \quad \Pi_2 = \begin{pmatrix} 0.5 & -0.2 & 0 \\ -0.1 & 0.3 & -0.2 \\ 0.7 & 0.1 & -0.5 \end{pmatrix}. \quad (6.3)$$

The true cointegrating rank is $r^* = 2$, since

$$\Pi = -(I_3 - \Pi_1 - \Pi_2) = \begin{pmatrix} 0 & 0 & 0 \\ -0.3 & -1.2 & 0.5 \\ 1 & 0.1 & -1.4 \end{pmatrix} \quad (6.4)$$

has rank 2. Observe from Figure 2 that both tests detect the cointegrating rank mostly correctly, though the Johansen test is quite undersized for this example.

In summary, the proposed cotrending test works in both examples as expected, while the cointegrating test certainly does not detect the cotrending dimension. The latter result was expected, since the simulated data in the first example appear stationary.

7 Applications

In this section, we apply the testing procedures proposed in Sections 3 and 4 to estimate the cotrending dimension and to make inference about the cotrending space in two real data sets. For comparison, we also apply the Johansen test to estimate the cointegrating rank.

The first data set concerns consumption in the United Kingdom. Three different variables are considered: the real consumption expenditure, the real income and the real wealth. The three series make part of the *Raotbl3* data set of the R package *urca* (Pfaff (2008)). Previous works on cointegrated time series have used this data set; see Holden and Perman (1994) and Pfaff (2008). The data are quarterly, from the fourth quarter in 1966 to the second quarter in 1991. The time plot of the three series is given in the left plot of Figure 3. From bottom to top, the time series represent consumption expenditure, income and wealth. Due to their similar temporal patterns, one might expect a relationship between consumption and income. Our testing procedure estimates the cotrending dimension and the cotrending space vector as

$$\hat{d}_1 = 1 \quad \text{and} \quad \hat{B}_1 = (0.7349 \quad -0.6758 \quad -0.0571)'. \quad (7.1)$$

(We used a 5% significance level in sequential testing for \hat{d}_1 .) As expected, the weights 0.7349 and -0.6758 are larger for the first two series (consumption and income). Since the third component of the vector \hat{B}_1 in (7.1) is close to zero, one might suspect that the vector

$$Q = (0.7349 \quad -0.6758 \quad 0)'$$

is an element of the underlying true cotrending subspace. In terms of the notation and procedure in Section 4, however, the hypothesis $H_0 : P_0 Q = Q$ in (4.2) is rejected at a 5% significance level.

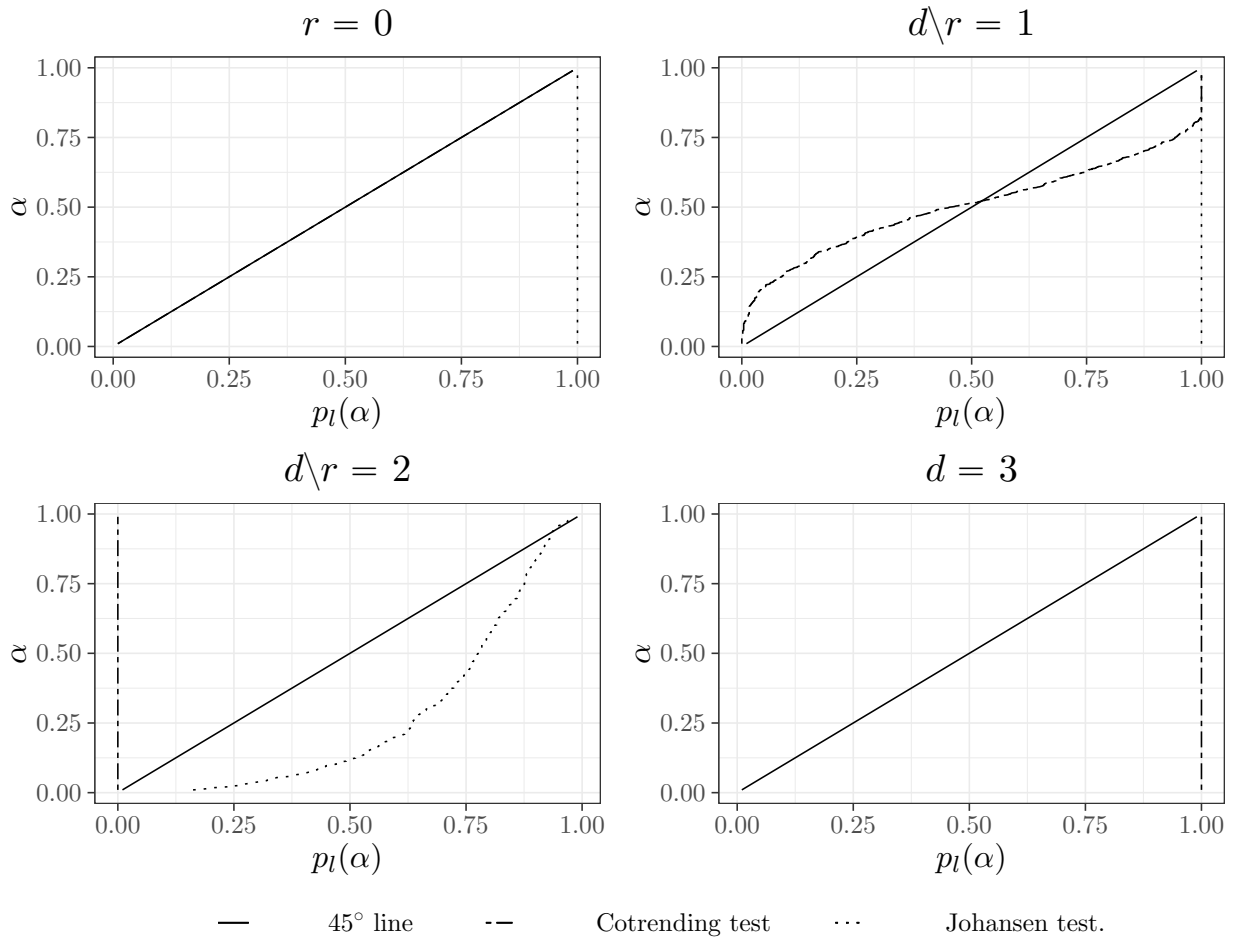


Figure 2: PP-plots of a simulated VAR(2) model with true cointegrating rank $r^* = 2$.

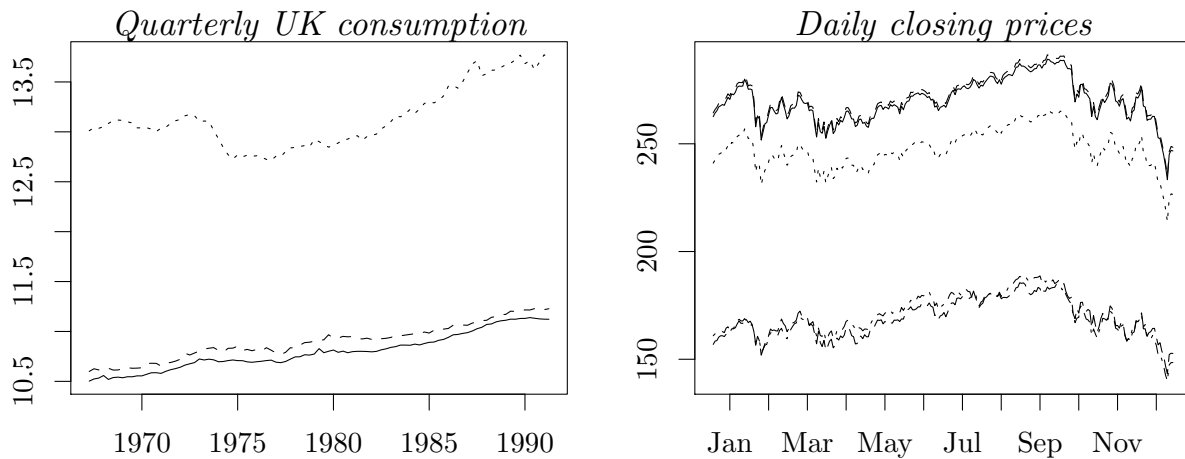


Figure 3: The time plots of the quarterly consumption series in the United Kingdom from 1967 to 1991 (left hand), and the daily closing price series of three different ETF baskets in 2015 (right plot).

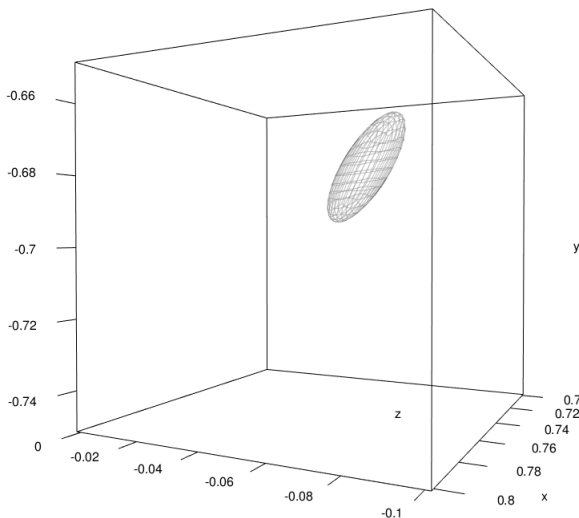


Figure 4: Visualization of the asymptotic 95% confidence region with respect to $\hat{\mathcal{B}}_1$ in (7.1) for the first data example (Consumption data of the United Kingdom).

Figure 4 shows the asymptotic 95% confidence region (4.4) computed from the estimated vector $\hat{V} = \hat{\mathcal{B}}_1$. Observe that the first and second components (represented by the x - and y -axes) of a cotrending vector Q in the confidence region are non-zero. Even though the third component (represented by the z -axis) takes values close to zero, it cannot be set to zero either. For this reason, all three time series are part of the cotrending relation.

The cointegrating rank r^* estimated by the Johansen test, at a 5% significance level, is $\hat{r}^* = 1$, and coincides with the estimated cotrending dimension. The corresponding cointegrating vector, normalized to the first component of the cotrending vector in (7.1), is

$$(0.7349 \quad -0.6837 \quad -0.0460)'$$

The second and third components are also similar to those of the cotrending vector in (7.1).

The second data set concerns five different ETF baskets, namely SPY, IVV, VOO, VBK and QQQ, available from *finance.yahoo.com* through the R package *quantmod* (Ryan and Ulrich (2018)). The considered ETFs track the US S&P 500 stock market index. The time plot of the five series is given in the right plot of Figure 3. The data set consists of the daily closing prices for the period Jan 01, 2015 to Dec 31, 2015. Proceeding as for the first data set above, we estimate the cotrending dimension and the cotrending space vectors as

$$\hat{d}_1 = 2 \quad \text{and} \quad \hat{\mathcal{B}}_1 = \begin{pmatrix} 0.8061 & -0.4368 & -0.3993 & 0.0002 & 0.0002 \\ -0.0026 & 0.6721 & -0.7404 & 0.0008 & 0.0069 \end{pmatrix}'. \quad (7.2)$$

Replacing the small entries of the matrix $\hat{\mathcal{B}}_1$ in (7.2) with zero, leads to

$$Q = \begin{pmatrix} 0.8061 & -0.4368 & -0.3993 & 0 & 0 \\ 0 & 0.6721 & -0.7404 & 0 & 0.0069 \end{pmatrix}',$$

which could naturally be tested to lie in the cotrending subspace \mathcal{B}_1 . Testing for this through the hypothesis in (4.2) at a 5% significance level, the null is not rejected. As a result, one gets two cotrending relations, each involving three data series.

Applying the Johansen test to estimate the cointegrating rank r^* yields $\hat{r}^* = 2$, which again coincides with the estimated cotrending dimension. The corresponding cointegrating vectors are estimated as

$$\begin{pmatrix} 0.8061 & -0.4327 & -0.4042 & 0.0005 & 0.0005 \\ 0.0507 & 0.6721 & -0.7992 & 0.0012 & 0.0078 \end{pmatrix}',$$

which are normalized with respect to the estimated cotrending space vectors in (7.2).

8 Conclusions

In this work, we proposed a modeling framework for p -vector time series exhibiting deterministic trends that allows testing about linear combinations across the p series which have constant means over time. The methodology could be viewed as an alternative to cointegration analysis that concerns stochastic trends.

Related to the last point, in particular, several other general remarks should be made. Possible advantages of the cotrending approach over cointegration are its relative simplicity and nonparametric nature, with deterministic trends even allowed to be discontinuous. A possible present disadvantage of the cotrending approach is its perhaps oversimplified model. But we view this model as foundational in considering more elaborate models. For example, one could try to incorporate temporal dependence in errors Y_t and we expect that in this case, a suitable estimator of M should involve the average of autocovariance functions over more lags than just one.

Yet another difference of the cotrending and the cointegration approaches is that the former makes no implications about existing long-term equilibria in a system, though the VM model could in principal be used in short-term forecasting as well. Whether the lack of long-term equilibria is viewed as disadvantage is perhaps up for debate.

A Proofs

Proof of Proposition 2.1: To prove the asymptotic normality of the estimator \widehat{M}_S in (2.3), we first consider \widehat{M} in (2.4) and prove its asymptotic normality using a result on possibly nonstationary m -dependent random variables in Sen (1968).

The estimator \widehat{M} in (2.4) can be written as

$$\widehat{M} = \frac{1}{T} \sum_{t=1}^{T-1} (X_t - \bar{X}_T)(X_{t+1} - \bar{X}_T)' = R_1 - R_2 - R_3 + R_4 \quad (\text{A.1})$$

with

$$\begin{aligned} R_1 &= \frac{1}{T} \sum_{t=1}^{T-1} \left(\mu\left(\frac{t}{T}\right) - \bar{\mu}_T \right) \left(\mu\left(\frac{t+1}{T}\right) - \bar{\mu}_T \right)', \\ R_2 &= \frac{1}{T} \sum_{t=1}^{T-1} (Y_t \bar{Y}'_T + \bar{Y}_T Y'_{t+1}) - \bar{Y}_T \bar{Y}'_T, \\ R_3 &= \frac{1}{T} \sum_{t=1}^{T-1} \left[\bar{Y}_T \left(\mu\left(\frac{t+1}{T}\right) - \bar{\mu}_T \right)' + \left(\mu\left(\frac{t}{T}\right) - \bar{\mu}_T \right) \bar{Y}'_T \right], \\ R_4 &= \frac{1}{T} \sum_{t=1}^{T-1} \left[Y_t Y'_{t+1} + Y_t \left(\mu\left(\frac{t+1}{T}\right) - \bar{\mu}_T \right)' + \left(\mu\left(\frac{t}{T}\right) - \bar{\mu}_T \right) Y'_{t+1} \right], \end{aligned}$$

where $\bar{\mu}_T = \frac{1}{T} \sum_{t=1}^T \mu\left(\frac{t}{T}\right)$. The term R_1 is the deterministic part in the decomposition (A.1), R_2 , R_3 will not contribute to the limit and R_4 will determine the normal limit. The deterministic term R_1 satisfies

$$R_1 = M + O\left(\frac{1}{T}\right) \quad (\text{A.2})$$

and the second term R_2 is such that

$$\sqrt{T}R_2 = \sqrt{T}\bar{Y}_T\bar{Y}'_T + o_p(1) = o_p(1). \quad (\text{A.3})$$

The term R_3 satisfies

$$\sqrt{T}R_3 = \frac{1}{\sqrt{T}} \sum_{t=1}^T Y_t \frac{1}{T} \sum_{t=1}^{T-1} \left(\mu\left(\frac{t+1}{T}\right) - \bar{\mu}_T\right)' + \frac{1}{T} \sum_{t=1}^{T-1} \left(\mu\left(\frac{t}{T}\right) - \bar{\mu}_T\right) \frac{1}{\sqrt{T}} \sum_{t=1}^T Y_t' = o_p(1) \quad (\text{A.4})$$

by the central limit theorem and since $\frac{1}{T} \sum_{t=1}^{T-1} \left(\mu\left(\frac{t}{T}\right) - \bar{\mu}_T\right) = O\left(\frac{1}{T}\right)$. It thus remains to prove the asymptotic normality of R_4 .

Consider a real matrix $\Lambda = (\lambda_{ij})_{i,j=1,\dots,p}$. By the Cramér-Wold theorem, it is enough to prove the asymptotic normality of $\frac{1}{T} \sum_{t=1}^T w_t$, where

$$w_t = \text{vec}(\Lambda)' \text{vec}(W_t), \quad W_t = Y_t Y_{t+1}' + Y_t \left(\mu\left(\frac{t+1}{T}\right) - \bar{\mu}_T\right)' + \left(\mu\left(\frac{t}{T}\right) - \bar{\mu}_T\right) Y_{t+1}'.$$

The multivariate sequence $\{W_t\}$ is 1-dependent and so is the univariate sequence $\{w_t\}$. Lemma 2.2 in Sen (1968) requires the moment condition $E|w_t|^{2+\delta} < \infty$ for some $\delta > 0$ and for all t .¹ Let $k = 2 + \delta$ and c be a generic constant that depends on p and can change from line to line. Set $W_t = (W_{ij,t})_{i,j=1,\dots,p}$ and let a single subscript i refer to the i th component of the respective vector. Then,

$$\begin{aligned} E|w_t|^k &= E|\text{tr}(\Lambda' W_t)|^k \leq \sum_{i,j=1}^p p^{2(k-1)} E|\lambda_{ji} W_{ij,t}|^k \leq c \max_{1 \leq i,j \leq p} |\lambda_{ij}|^k \sum_{i,j=1}^p E|W_{ij,t}|^k \\ &\leq c 3^{k-1} \sum_{i,j=1}^p (E|Y_{i,t} Y_{j,t+1}|^k + E|Y_{i,t} \left(\mu_j\left(\frac{t+1}{T}\right) - \bar{\mu}_{j,T}\right)|^k + E\left|\left(\mu_i\left(\frac{t+1}{T}\right) - \bar{\mu}_{i,T}\right) Y_{j,t}\right|^k), \end{aligned} \quad (\text{A.5})$$

where we used Hölder's inequality. The conclusion that the last expression is finite follows by using

$$E|Y_{i,t}|^k \leq p^{k-1} \sum_{l=1}^p \sup_{1 \leq t \leq T} |\sigma_{il}\left(\frac{t}{T}\right)|^k E|Z_{l,0}|^k < \infty,$$

since $E\|Z_0\|^k < \infty$, and the piecewise continuity of μ and σ^2 . Combining (A.2), (A.3), (A.4), (A.5) and Lemma A.1 below, Lemma 2.2 in Sen (1968) gives

$$\sqrt{T} \text{vec}(\widehat{M} - M) \xrightarrow{d} \mathcal{N}(0, \tilde{C})$$

with \tilde{C} as in (A.7). Note that $D_p^+ \text{vec}(A) = \text{vech}(A)$ and $D_p^+ N_p = D_p^+$ with $N_p = \frac{1}{2}(I_{p^2} + K_p)$, where K_p denotes the so-called commutation matrix, which transforms $\text{vec}(A)$ into $\text{vec}(A')$ for a matrix $A \in \mathbb{R}^{p \times p}$. Furthermore, $N_p \text{vec}(\widehat{M}) = \text{vec}(\widehat{M}_S)$. These observations yield

$$\sqrt{T} \text{vech}(\widehat{M}_S - M) \xrightarrow{d} \mathcal{N}(0, C)$$

with C as in (2.5). □

¹The moment condition in Sen (1968) is stated with $\delta = 1$ but the proof also works for $\delta > 0$.

The next auxiliary result was used in the proof of Proposition 2.1 above.

Lemma A.1. *Suppose that the assumptions of Proposition 2.1 hold. Let \widehat{M} be the estimator in (2.4) and R_4 be the last term in the decomposition (A.1). Then, the covariance matrices of $\widehat{M} - M$ and R_4 satisfy*

$$\mathbb{E}(\text{vec}(\widehat{M} - M)(\text{vec}(\widehat{M} - M))') = \mathbb{E} R_4 R_4' + o\left(\frac{1}{T}\right) = \frac{1}{T} \tilde{C} + o\left(\frac{1}{T}\right) \quad (\text{A.6})$$

with

$$\begin{aligned} \tilde{C} &= \int_0^1 \sigma^2(u) \otimes \sigma^2(u) du + 2 \int_0^1 (\mu(u) - \bar{\mu})(\mu(u) - \bar{\mu})' \otimes \sigma^2(u) du N_p \\ &\quad + 2 \int_0^1 \sigma^2(u) \otimes (\mu(u) - \bar{\mu})(\mu(u) - \bar{\mu})' du N_p. \end{aligned} \quad (\text{A.7})$$

Proof: The first relation in (A.6) follows from (A.2), (A.3) and (A.4). It is thus enough to show the second relation in (A.6) concerning the covariance of R_4 . Decompose R_4 into $R_4 = R_{41} + R_{42}$ with

$$\begin{aligned} R_{41} &= \frac{1}{T} \sum_{t=1}^T Y_t Y_{t+1}', \\ R_{42} &= \frac{1}{T} \sum_{t=1}^T \left[Y_t \left(\mu\left(\frac{t+1}{T}\right) - \bar{\mu}_T \right)' + \left(\mu\left(\frac{t}{T}\right) - \bar{\mu}_T \right) Y_{t+1}' \right]. \end{aligned}$$

We consider these terms separately to calculate the limiting covariance matrix.

For R_{41} , we write

$$\begin{aligned} \mathbb{E}(\text{vec}(R_{41})(\text{vec}(R_{41}))') &= \frac{1}{T^2} \sum_{t,r=1}^T \mathbb{E} \left(\text{vec}(Y_t Y_{t+1}') (\text{vec}(Y_r Y_{r+1}')') \right) \\ &= \frac{1}{T^2} \sum_{t,r=1}^T \mathbb{E} \left((I_p \otimes Y_t) Y_{t+1} Y_{r+1}' (I_p \otimes Y_r)' \right) \\ &= \frac{1}{T^2} \sum_{t,r=1}^T \mathbb{E} \left((I_p \otimes Y_t) (Y_{t+1} Y_{r+1}' \otimes 1) (I_p \otimes Y_r)' \right) \\ &= \frac{1}{T^2} \sum_{t,r=1}^T \mathbb{E}(Y_{t+1} Y_{r+1}' \otimes Y_t Y_r') = \frac{1}{T} \int_0^1 \sigma^2(u) \otimes \sigma^2(u) du + O\left(\frac{1}{T^2}\right), \end{aligned} \quad (\text{A.8})$$

where the second equality follows by $\text{vec}(AB) = (I_q \otimes A) \text{vec}(B) = (B' \otimes I_m) \text{vec}(A)$ for an $m \times n$ matrix A and an $n \times q$ matrix B ; see Theorem 2 in Magnus and Neudecker (1999), p. 35. In the fourth equality, the relation $AB \otimes CD = (A \otimes C)(B \otimes D)$ is used.

The covariance of the term R_{42} can be written as

$$\begin{aligned} \mathbb{E}(\text{vec}(R_{42})(\text{vec}(R_{42}))') &= \frac{1}{T} 2 \int_0^1 (\mu(u) - \bar{\mu})(\mu(u) - \bar{\mu})' \otimes \sigma^2(u) du N_p \\ &\quad + \frac{1}{T} 2 \int_0^1 \sigma^2(u) \otimes (\mu(u) - \bar{\mu})(\mu(u) - \bar{\mu})' du N_p + O\left(\frac{1}{T^2}\right), \end{aligned} \quad (\text{A.9})$$

since for example

$$\begin{aligned}
& \frac{1}{T^2} \sum_{t,r=1}^T \mathbb{E} \left[\text{vec} \left(Y_t \left(\mu \left(\frac{t+1}{T} \right) - \bar{\mu}_T \right)' \right) \left(\text{vec} \left(Y_r \left(\mu \left(\frac{r+1}{T} \right) - \bar{\mu}_T \right)' \right) \right)' \right] \\
&= \frac{1}{T^2} \sum_{t,r=1}^T \left(\left(\mu \left(\frac{t+1}{T} \right) - \bar{\mu}_T \right) \otimes I_p \right) \mathbb{E} (Y_t Y_r') \left(\left(\mu \left(\frac{r+1}{T} \right) - \bar{\mu}_T \right)' \otimes I_p \right) \\
&= \frac{1}{T^2} \sum_{t=1}^T \left(\left(\mu \left(\frac{t+1}{T} \right) - \bar{\mu}_T \right) \otimes I_p \right) \left(1 \otimes \sigma^2 \left(\frac{t}{T} \right) \right) \left(\left(\mu \left(\frac{t+1}{T} \right) - \bar{\mu}_T \right)' \otimes I_p \right) \\
&= \frac{1}{T} \int_0^1 (\mu(u) - \bar{\mu})(\mu(u) - \bar{\mu})' \otimes \sigma^2(u) du + O\left(\frac{1}{T^2}\right),
\end{aligned}$$

where we used the same arguments as in (A.8). \square

Proof of Proposition 2.2: To prove the consistency of \hat{C} in (2.7), we use Theorem 2 in Andrews (1988), which gives sufficient conditions for the law of large numbers for L^1 -mixingales.

For simplicity, we replace \bar{X}_T with $\bar{\mu}$ by the weak law of large numbers and decompose the resulting estimator \hat{C} as

$$\frac{1}{T} \sum_{t=1}^{T-3} \left(\frac{1}{4} (\Delta X_{t+1})^2 \otimes (\Delta X_{t+3})^2 + 2((\Delta X_{t+3})^2 \otimes (X_t - \bar{\mu})(X_{t+1} - \bar{\mu})') \right) = A_1 + A_2 + B_1 + B_2,$$

where setting $\tilde{M}_t = \mu\left(\frac{t}{T}\right)$,

$$\begin{aligned}
A_1 &= \frac{1}{T} \sum_{t=1}^{T-3} \frac{1}{4} (\Delta \tilde{M}_{t+1})^2 \otimes (\Delta \tilde{M}_{t+3})^2, \\
A_2 &= \frac{1}{T} \sum_{t=1}^{T-3} \frac{1}{4} \left[(\Delta \tilde{M}_{t+1})^2 \otimes \left((\Delta Y_{t+3})^2 + \Delta Y_{t+3} (\Delta \tilde{M}_{t+3})' + \Delta \tilde{M}_{t+3} (\Delta Y_{t+3})' \right) \right. \\
&\quad + \left((\Delta Y_{t+1})^2 + \Delta Y_{t+1} (\Delta \tilde{M}_{t+1})' + \Delta \tilde{M}_{t+1} (\Delta Y_{t+1})' \right) \otimes (\Delta \tilde{M}_{t+3})^2 \\
&\quad \left. + \left((\Delta Y_{t+1})^2 + \Delta Y_{t+1} (\Delta \tilde{M}_{t+1})' + \Delta \tilde{M}_{t+1} (\Delta Y_{t+1})' \right) \otimes \left((\Delta Y_{t+3})^2 + \Delta Y_{t+3} (\Delta \tilde{M}_{t+3})' + \Delta \tilde{M}_{t+3} (\Delta Y_{t+3})' \right) \right] \\
&=: \frac{1}{T} \sum_{t=1}^{T-3} W_{t,1}, \\
B_1 &= \frac{1}{T} \sum_{t=1}^{T-3} 2(\Delta \tilde{M}_{t+3})^2 \otimes (\tilde{M}_t - \bar{\mu})(\tilde{M}_{t+1} - \bar{\mu})', \\
B_2 &= \frac{1}{T} \sum_{t=1}^{T-3} 2 \left[\left((\Delta Y_{t+3})^2 + \Delta Y_{t+3} (\Delta \tilde{M}_{t+3})' + \Delta \tilde{M}_{t+3} (\Delta Y_{t+3})' \right) \otimes (X_t - \bar{\mu})(X_{t+1} - \bar{\mu})' \right. \\
&\quad \left. + (\Delta \tilde{M}_{t+3})^2 \otimes \left(Y_t Y_{t+1}' + Y_t (\tilde{M}_{t+1} - \bar{\mu})' + (\tilde{M}_t - \bar{\mu}) Y_{t+1}' \right) \right] =: \frac{1}{T} \sum_{t=1}^{T-3} W_{t,2}.
\end{aligned}$$

The deterministic terms A_1 and B_1 are asymptotically negligible, since $A_1 = O\left(\frac{1}{T}\right)$ and $B_1 =$

$O\left(\frac{1}{T}\right)$. For the terms A_2 and B_2 , note that

$$\begin{aligned} \mathbb{E} A_2 &= \frac{1}{T} \sum_{t=1}^{T-3} \frac{1}{4} \mathbb{E} \left((\Delta \widetilde{M}_{t+1})^2 \otimes (\Delta Y_{t+3})^2 + (\Delta Y_{t+1})^2 \otimes (\Delta \widetilde{M}_{t+3})^2 + (\Delta Y_{t+1})^2 \otimes (\Delta Y_{t+3})^2 \right) \\ &= \frac{1}{T} \sum_{t=1}^{T-3} \frac{1}{4} \mathbb{E} \left((\Delta Y_{t+1})^2 \otimes (\Delta Y_{t+3})^2 \right) + O\left(\frac{1}{T}\right) = \int_0^1 \sigma^2(u) \otimes \sigma^2(u) du + O\left(\frac{1}{T}\right), \\ \mathbb{E} B_2 &= \frac{1}{T} \sum_{t=1}^{T-3} 2 \mathbb{E} \left((\Delta Y_{t+3})^2 \otimes (X_t - \bar{\mu})(X_{t+1} - \bar{\mu})' \right) \\ &= 4 \int_0^1 \sigma^2(u) \otimes (\mu(u) - \bar{\mu})(\mu(u) - \bar{\mu})' du + O\left(\frac{1}{T}\right). \end{aligned}$$

Then,

$$\begin{aligned} \frac{1}{T} \sum_{t=1}^{T-3} (W_{t,1} - \mathbb{E} W_{t,1}) + \frac{1}{T} \sum_{t=1}^{T-3} \mathbb{E} W_{t,1} - \int_0^1 \sigma^2(u) \otimes \sigma^2(u) du &= \frac{1}{T} \sum_{t=1}^{T-3} (W_{t,1} - \mathbb{E} W_{t,1}) + O\left(\frac{1}{T}\right), \\ \frac{1}{T} \sum_{t=1}^{T-3} (W_{t,2} - \mathbb{E} W_{t,2}) + \frac{1}{T} \sum_{t=1}^{T-3} \mathbb{E} W_{t,2} - 4 \int_0^1 \sigma^2(u) \otimes (\mu(u) - \bar{\mu})(\mu(u) - \bar{\mu})' du \\ &= \frac{1}{T} \sum_{t=1}^{T-3} (W_{t,2} - \mathbb{E} W_{t,2}) + O\left(\frac{1}{T}\right), \end{aligned}$$

where we subtracted the respective summands of C and included the expected values of $W_{t,1}$ and $W_{t,2}$. To prove the convergence in probability, it is enough to consider $W_{t,1} - \mathbb{E} W_{t,1}$ and $W_{t,2} - \mathbb{E} W_{t,2}$ componentwise. We write

$$R_{1,t} = (W_{t,1} - \mathbb{E} W_{t,1})_{ij}, \quad R_{2,t} = (W_{t,2} - \mathbb{E} W_{t,2})_{ij},$$

where the subscript denotes the ij th component for $i, j = 1, \dots, p^2$. The sequences $\{R_{1,t}\}$ and $\{R_{2,t}\}$ are 3-dependent and hence L^1 -mixingales. By Theorem 2 in Andrews (1988), the uniform integrability of $R_{1,t}$ and $R_{2,t}$ implies convergence to zero in probability of the corresponding sample means. Since,

$$\mathbb{E} |R_{1,t}|^{2+\delta} < \infty \quad \text{and} \quad \mathbb{E} |R_{2,t}|^{2+\delta} < \infty \quad \text{for all } t = 1, \dots, T$$

by using the same arguments as in (A.5), the piecewise continuity of μ and σ^2 and the moment condition $\mathbb{E} \|Z_0\|^{2+\delta}$ suffice to prove the uniform integrability of $R_{1,t}$ and $R_{2,t}$. \square

Proof of Proposition 5.1: Following the notation in Section 5.2, we decompose X_t given by its Granger representation (5.6) in accordance to the zero and nonzero rows of the matrix L in (5.7) into

$$X_t = \begin{pmatrix} X_{1,t} \\ X_{2,t} \end{pmatrix} = \begin{pmatrix} L_n Z_{1,t} + I_{1,n} Z_{2,t} + I_{1,n} \tilde{X}_0 \\ I_{2,p-n} Z_{2,t} + I_{2,p-n} \tilde{X}_0 \end{pmatrix}, \quad (\text{A.10})$$

where

$$Z_{1,t} = \sum_{i=1}^t \varepsilon_i \quad \text{and} \quad Z_{2,t} = \sum_{j=0}^{\infty} \tilde{L}_j \varepsilon_{t-j}.$$

Note that

$$\frac{1}{T^{1/2}} \tilde{X}_0 = o_p(1), \quad \frac{1}{T} \sum_{t=1}^T Z_{2,t} = o_p(1), \quad \frac{1}{T} \sum_{t=1}^T \varepsilon_t = o_p(1), \quad (\text{A.11})$$

where the second relation follows by Proposition 6.3.10 in Brockwell and Davis (1991). As in the proof of Proposition 2.1 we first investigate the convergence result for \widehat{M} in (2.4). The normalized estimator \widehat{M} can be written as

$$\Delta_{2,T}^{-\frac{1}{2}} \widehat{M} \Delta_{2,T}^{-\frac{1}{2}} = \begin{pmatrix} \frac{1}{T} R_{11} & \frac{1}{T^{1/2}} R_{12} \\ \frac{1}{T^{1/2}} R_{21} & R_{22} \end{pmatrix},$$

where

$$R_{ij} = \frac{1}{T} \sum_{t=1}^{T-1} (X_{i,t} - \bar{X}_i)(X_{j,t+1} - \bar{X}_j)' \quad \text{and} \quad \bar{X}_i = \frac{1}{T} \sum_{t=1}^T X_{i,t} \quad \text{for } i, j = 1, 2$$

with $X_{i,t}$ for $i = 1, 2$ as in (A.10). We consider the terms R_{11} , R_{22} , R_{12} and R_{21} separately.

Set $\bar{Z}_1 = \frac{1}{T} \sum_{t=1}^T Z_{1,t}$. Then, R_{11} can be written as

$$\begin{aligned} \frac{1}{T} R_{11} &= \frac{1}{T^2} \sum_{t=1}^{T-1} (X_{1,t} - L_n \bar{Z}_1)(X_{1,t+1} - L_n \bar{Z}_1)' + o_p(1) \\ &= \frac{1}{T^2} \sum_{t=1}^{T-1} (L_n Z_{1,t} + I_{1,n} Z_{2,t} - L_n \bar{Z}_1)(L_n(Z_{1,t} + \varepsilon_{t+1}) + I_{1,n} Z_{2,t+1} - L_n \bar{Z}_1)' + o_p(1) \quad (\text{A.12}) \\ &= \frac{1}{T^2} \sum_{t=1}^{T-1} L_n(Z_{1,t} - \bar{Z}_1)(Z_{1,t} - \bar{Z}_1)' L_n' + o_p(1), \end{aligned}$$

where the first, second and third equalities follow by (A.11) and Lemma A.2, (i), (ii) and (iv), below. Then, (A.12) and Lemma 3.1, (c) in Phillips and Durlauf (1986) yield

$$\frac{1}{T} R_{11} = \frac{1}{T^2} \sum_{t=1}^T L_n(Z_{1,t} - \bar{Z}_1)(Z_{1,t} - \bar{Z}_1)' L_n' + o_p(1) \xrightarrow{d} L_n \Sigma_{\varepsilon}^{\frac{1}{2}} Z \Sigma_{\varepsilon}^{\frac{1}{2}} L_n'.$$

The matrix R_{22} contains only stationary components. Its convergence

$$R_{22} = \frac{1}{T} \sum_{t=1}^{T-1} I_{2,p-n}(Z_{2,t} - \bar{Z}_2)(Z_{2,t+1} - \bar{Z}_2)' I_{2,p-n}' + o_p(1) \xrightarrow{p} \Upsilon_{p-n}(1)$$

is a consequence of Lemma A.2, (iv), where $\bar{Z}_2 = \frac{1}{T} \sum_{t=1}^T Z_{2,t}$ and

$$\Upsilon_{p-n}(1) = I_{2,p-n} \text{Cov}(Z_{2,0}, Z_{2,1}) I_{2,p-n}' = I_{2,p-n} \sum_{j=0}^{\infty} \tilde{L}_j \tilde{L}_{j+1}' I_{2,p-n}'$$

denotes the autocovariances of order one.

The third term R_{12} satisfies

$$\begin{aligned} \frac{1}{T^{1/2}} R_{12} &= \frac{1}{T^{3/2}} \sum_{t=1}^{T-1} (L_n Z_{1,t} + I_{1,n} Z_{2,t} - L_n \bar{Z}_1)(I_{2,p-n} Z_{2,t+1} - I_{2,p-n} \bar{Z}_2)' + o_p(1) \\ &= \frac{1}{T^{3/2}} \sum_{t=1}^{T-1} L_n(Z_{1,t} - \bar{Z}_1)(Z_{2,t+1} - \bar{Z}_2)' I_{2,p-n}' + o_p(1) \quad (\text{A.13}) \\ &= \frac{1}{T^{3/2}} \sum_{t=1}^{T-1} L_n(Z_{1,t} Z_{2,t+1}' - \frac{1}{T^{1/2}} \bar{Z}_1 \bar{Z}_2') I_{2,p-n}' + o_p(1), \end{aligned}$$

where the first equality follows by (A.11) and the second equality by Lemma A.2, (iv). Finally, $\frac{1}{T^{1/2}}R_{12} = o_p(1)$, since the product of the normalized sample means $\frac{1}{T^{1/2}}\bar{Z}_1\bar{Z}_2 = o_p(1)$ by Lemma A.2, (iii) and (A.11). The remaining term in the last line of (A.13) satisfies $\frac{1}{T^{3/2}}\sum_{t=1}^{T-1}Z_{1,t}Z'_{2,t+1} = o_p(1)$ by Lemma A.2 (ii).

The result for the fourth term R_{21} follows by the same arguments as in (A.13). The convergence in distribution of the symmetric estimator \widehat{M}_S is a consequence of the established convergence of \widehat{M} . \square

The following lemma was used in the preceding proof.

Lemma A.2. *Set $Z_{1,t} = \sum_{i=1}^t \varepsilon_i$ and $Z_{2,t} = \sum_{j=0}^{\infty} \tilde{L}_j \varepsilon_{t-j}$, where $\{\varepsilon_t\}_{t \in \mathbb{Z}}$ is a sequence of i.i.d. random vectors satisfying (5.2) with positive definite Σ_ε and $E \|\varepsilon_0\|^4 < \infty$, and $\sum_{j=0}^{\infty} \|\tilde{L}_j\|_F < \infty$. Then,*

- (i) $\frac{1}{T} \sum_{t=1}^{T-1} Z_{1,t-1} \varepsilon'_t \xrightarrow{d} \frac{1}{2} (\Sigma_\varepsilon^{\frac{1}{2}} Z(1) Z(1)' \Sigma_\varepsilon^{\frac{1}{2}} - \Sigma_\varepsilon)$,
- (ii) $\frac{1}{T} \sum_{t=1}^{T-1} Z_{1,t} Z'_{2,t+1} \xrightarrow{d} \frac{1}{2} (\Sigma_\varepsilon^{\frac{1}{2}} Z(1) Z(1)' \Sigma_\varepsilon^{\frac{1}{2}} + \Sigma_\varepsilon) \sum_{j=0}^{\infty} \tilde{L}'_j$,
- (iii) $\frac{1}{T^{3/2}} \sum_{t=1}^T Z_{1,t} \xrightarrow{d} \Sigma_\varepsilon^{1/2} \int_0^1 Z(t) dt$,
- (iv) $\frac{1}{T} \sum_{t=1}^{T-1} Z_{2,t} Z'_{2,t+1} - \text{Cov}(Z_{2,0}, Z_{2,1}) \xrightarrow{p} 0$,

where $Z(t)$ is a p -dimensional standard Brownian motion.

Proof: The statement (i) is the same as in Lemma 3.1, (d) in Phillips and Durlauf (1986).

For the convergence in (ii), set

$$\frac{1}{T} \sum_{t=1}^{T-1} Z_{1,t} Z'_{2,t+1} = \sum_{j=0}^{\infty} \frac{1}{T} \sum_{t=1}^{T-1} Z_{1,t} \varepsilon'_{t-(j-1)} \tilde{L}'_j =: \sum_{j=0}^{\infty} Y_j(T).$$

Then, by Theorem 4.2 in Billingsley (1986), it is enough to prove

$$\sum_{j=0}^k Y_j(T) \xrightarrow{d} \frac{1}{2} (\Sigma_\varepsilon^{\frac{1}{2}} Z(1) Z(1)' \Sigma_\varepsilon^{\frac{1}{2}} + \Sigma_\varepsilon) \sum_{j=0}^k \tilde{L}'_j \quad (\text{A.14})$$

for each $k \geq 1$ and

$$\sum_{j=k+1}^{\infty} Y_j(T) = o_p(1), \quad \text{as } T \rightarrow \infty, \quad k \rightarrow \infty. \quad (\text{A.15})$$

The convergence in (A.14) is a consequence of

$$\begin{aligned} \sum_{j=0}^k Y_j(T) &= \sum_{j=0}^k \frac{1}{T} \sum_{t=1}^{T-1} \left(Z_{1,t-j} \varepsilon'_{t-(j-1)} + \sum_{i=t-j+1}^t \varepsilon_i \varepsilon'_{t-(j-1)} \right) \tilde{L}'_j \\ &= \sum_{j=0}^k \left(\frac{1}{T} \sum_{t=1}^{T-1} Z_{1,t-j} \varepsilon'_{t-(j-1)} + \sum_{l=0}^{j-1} \frac{1}{T} \sum_{t=1}^{T-1} \varepsilon_{t-l} \varepsilon'_{t-(j-1)} \right) \tilde{L}'_j \\ &= \sum_{j=0}^k \left(\frac{1}{T} \sum_{t=1-j}^{T-1-j} Z_{1,t} \varepsilon'_{t+1} + \Sigma_\varepsilon \right) \tilde{L}'_j + o_p(1) \end{aligned} \quad (\text{A.16})$$

$$= \left(\frac{1}{T} \sum_{t=1}^{T-1} Z_{1,t} \varepsilon'_{t+1} + \Sigma_\varepsilon \right) \sum_{j=0}^k \tilde{L}'_j + o_p(1) \quad (\text{A.17})$$

$$\stackrel{d}{\rightarrow} \frac{1}{2} (\Sigma_\varepsilon^{\frac{1}{2}} Z(1) Z(1)' \Sigma_\varepsilon^{\frac{1}{2}} + \Sigma_\varepsilon) \sum_{j=0}^k \tilde{L}'_j. \quad (\text{A.18})$$

The equality (A.16) follows since $\{\varepsilon_j\}_{j \in \mathbb{Z}}$ is stationary and ergodic, and so is any transformation of ε_j . Indeed, by the ergodic theorem and since $\mathbb{E} \varepsilon_{t-l} \varepsilon'_{t-(j-1)} = \Sigma_\varepsilon$ for $l = j - 1$ and 0 otherwise,

$$\frac{1}{T} \sum_{t=1}^{T-1} \sum_{l=0}^{j-1} \varepsilon_{t-l} \varepsilon'_{t-(j-1)} \tilde{L}'_j = \mathbb{E} \left(\sum_{l=0}^{j-1} \varepsilon_{t-l} \varepsilon'_{t-(j-1)} \tilde{L}'_j \right) + o_p(1) = \Sigma_\varepsilon \tilde{L}'_j + o_p(1), \quad (\text{A.19})$$

see Theorem 2 in Hannan (1970), p. 203. For the equality (A.17) note that

$$\frac{1}{T} \sum_{t=1-j}^{T-1-j} Z_{1,t} \varepsilon'_{t+1} = \frac{1}{T} \sum_{t=1}^{T-1} Z_{1,t} \varepsilon'_{t+1} + o_p(1), \quad (\text{A.20})$$

since

$$\begin{aligned} \mathbb{E} \left\| \frac{1}{T} \sum_{t=r}^s Z_{1,t} \varepsilon'_{t+1} \right\|_F^2 &= \frac{1}{T^2} \sum_{t_1, t_2=r}^s \sum_{i_1=1}^{t_1} \sum_{i_2=1}^{t_2} \mathbb{E} \operatorname{tr}(\varepsilon_{t_1+1} \varepsilon'_{i_1} \varepsilon_{i_2} \varepsilon'_{t_2+1}) \\ &= \frac{1}{T^2} \sum_{t=r}^s t (\mathbb{E} \|\varepsilon_0\|^2)^2 = o(1), \end{aligned} \quad (\text{A.21})$$

where either $r = 1 - j$ and $s = 0$ or $r = T - j$ and $s = T - 1$. The convergence in (A.18) is a consequence of (i).

The equality (A.15) can be proven by

$$\begin{aligned} &\mathbb{E} \left\| \sum_{j=k+1}^{\infty} Y_j(T) \right\|_F^2 \\ &= \sum_{j_1, j_2=k+1}^{\infty} \frac{1}{T^2} \sum_{t_1, t_2=1}^{T-1} \sum_{i_1=1}^{t_1} \sum_{i_2=1}^{t_2} \mathbb{E} \operatorname{tr} \left(\tilde{L}_{j_1} \varepsilon_{t_1-(j_1-1)} \varepsilon'_{i_1} \varepsilon_{i_2} \varepsilon'_{t_2-(j_2-1)} \tilde{L}'_{j_2} \right) \\ &= \sum_{j_1, j_2=k+1}^{\infty} \frac{1}{T^2} \sum_{l_1=2-j_1}^{T-j_1} \sum_{l_2=2-j_2}^{T-j_2} \sum_{i_1=1}^{l_1+j_1-1} \sum_{i_2=1}^{l_2+j_2-1} \operatorname{tr} \left(\mathbb{E}(\varepsilon_{l_1} \varepsilon'_{i_1} \varepsilon_{i_2} \varepsilon'_{l_2}) \tilde{L}'_{j_2} \tilde{L}_{j_1} \right) \\ &= \sum_{j_1, j_2=k+1}^{T+1} \frac{1}{T^2} \sum_{l=2-\bar{m}}^{T-\bar{m}} \operatorname{tr}(\Sigma^* \tilde{L}'_{j_2} \tilde{L}_{j_1}) + 2 \sum_{j_1, j_2=k+1}^{T+1} \frac{1}{T^2} \sum_{l_1=2-j_1}^{T-j_1} \sum_{l_2=2-j_2}^{T-j_2} \operatorname{tr}(\Sigma_\varepsilon^2 \tilde{L}'_{j_2} \tilde{L}_{j_1}) \\ &+ \sum_{j_1, j_2=k+1}^{\infty} \frac{1}{T^2} \sum_{l=2-\bar{m}}^{T-\bar{m}} \sum_{i=1}^{l+\bar{m}-1} \mathbb{E} \|\varepsilon_0\|^2 \operatorname{tr}(\Sigma_\varepsilon \tilde{L}'_{j_2} \tilde{L}_{j_1}) \\ &= \sum_{j_1, j_2=k+1}^{T+1} \frac{1}{T^2} (T - 1 + \bar{m} - \underline{m}) (\operatorname{tr}(\Sigma^* \tilde{L}'_{j_2} \tilde{L}_{j_1}) + \mathbb{E} \|\varepsilon_0\|^2 \operatorname{tr}(\Sigma_\varepsilon \tilde{L}'_{j_2} \tilde{L}_{j_1})) \\ &+ 2 \sum_{j_1, j_2=k+1}^{T+1} \frac{1}{T^2} (T - 1)^2 \operatorname{tr}(\Sigma_\varepsilon^2 \tilde{L}'_{j_2} \tilde{L}_{j_1}) \end{aligned}$$

$$\leq 2 \sum_{j_1, j_2=k+1}^{T+1} \frac{1}{T} |\text{tr}(\Sigma^* \tilde{L}'_{j_2} \tilde{L}_{j_1}) + \mathbb{E} \|\varepsilon_0\|^2 \text{tr}(\Sigma_\varepsilon \tilde{L}'_{j_2} \tilde{L}_{j_1})| + 2 \sum_{j_1, j_2=k+1}^{T+1} |\text{tr}(\Sigma_\varepsilon^2 \tilde{L}'_{j_2} \tilde{L}_{j_1})| \rightarrow 0,$$

as $T \rightarrow \infty$ and $k \rightarrow \infty$, since $\sum_{j=0}^{\infty} \|\tilde{L}_j\|_F < \infty$. Thereby, we used the notation $\underline{m} = \min\{j_1, j_2\}$, $\bar{m} = \max\{j_1, j_2\}$, $\Sigma^* := \mathbb{E}(\varepsilon_0 \varepsilon'_0 \varepsilon_0 \varepsilon'_0)$ and the fact that

$$\mathbb{E}(\varepsilon_{l_1} \varepsilon'_{i_1} \varepsilon_{i_2} \varepsilon'_{l_2}) = \begin{cases} \Sigma^*, & i_1 = i_2 = l_1 = l_2, \\ \Sigma_\varepsilon^2, & i_1 = l_1 \neq i_2 = l_2, \\ \Sigma_\varepsilon^2, & i_1 = l_2 \neq i_2 = l_1, \\ \mathbb{E} \|\varepsilon_0\|^2 \Sigma_\varepsilon, & i_1 = i_2 \neq l_1 = l_2. \end{cases}$$

The statement (iii) is proven in Lemma 3.1, (a) in Phillips and Durlauf (1986), p. 210. The last point (iv) gives the weak law of large numbers for the sample autocovariances of linear processes and is proven in Hannan (1970), p. 210. \square

Proof of Proposition 4.1: By Theorem 2 in Samworth et al. (2014), there is an orthogonal matrix $\hat{O} \in \mathbb{R}^{d \times d}$, such that

$$\|\hat{V} \hat{O} - V\|_F \leq 2^{\frac{3}{2}} \frac{\|\widehat{M}_S - M\|_F}{\min\{\lambda_{i-1} - \lambda_i, \lambda_{i+d-1} - \lambda_{i+d}\}}. \quad (\text{A.22})$$

Set $\tau = \varepsilon \min\{\lambda_{i-1} - \lambda_i, \lambda_{i+d-1} - \lambda_{i+d}\} 2^{-\frac{3}{2}}$. Then, by applying (A.22) and Chebyshev's inequality, we get for all $\varepsilon > 0$,

$$\begin{aligned} \mathbb{P}(\|\hat{V} \hat{O} - V\|_F \geq \varepsilon) &\leq \mathbb{P}(\|\widehat{M}_S - M\|_F \geq \tau) = \mathbb{P}\left(\left(\sum_{i,j=1}^p |e'_i(\widehat{M}_S - M)e_j|^2\right)^{\frac{1}{2}} \geq \tau\right) \\ &\leq \frac{1}{\tau^2} \mathbb{E} \sum_{i,j=1}^p |e'_i(\widehat{M}_S - M)e_j|^2 \\ &= \frac{1}{\tau^2} \sum_{i,j=1}^p (\text{vec}(e_i e'_j))' \left(\frac{1}{T} N_p \tilde{C} N'_p + o\left(\frac{1}{T}\right)\right) \text{vec}(e_i e'_j) \\ &= \frac{1}{\tau^2} \frac{1}{T} (\text{tr}(N_p^2 \tilde{C}) + p^2 o(1)), \end{aligned}$$

where $\{e_i\}_{i=1, \dots, p}$ are p -dimensional unit vectors and the second to last equality is a consequence of Lemma A.1 with \tilde{C} as in (A.7). \square

References

- T. W. Anderson. Estimating linear restrictions on regression coefficients for multivariate normal distributions. *The Annals of Mathematical Statistics*, 22(3):327–351, 1951.
- D. Andrews. Laws of large numbers for dependent non-identically distributed random variables. *Econometric Theory*, 4(3):458–467, 1988.
- P. Billingsley. *Probability and Measure*. John Wiley and Sons, second edition, 1986.
- D. A. J. Blythe, P. Von Bünau, F. C. Meinecke, and K.-R. Müller. Feature extraction for change-point detection using stationary subspace analysis. *IEEE Transactions on Neural Networks and Learning Systems*, 23(4):631–643, 2012.

- P. J. Brockwell and R. A. Davis. *Time Series: Theory and Methods*. Springer Series in Statistics. Springer-Verlag, New York, second edition, 1991.
- G. Camba-Mendez and G. Kapetanios. Testing the rank of the Hankel covariance matrix: a statistical approach. *IEEE Transactions on Automatic Control*, 46(2):331–336, 2001.
- J. G. Cragg and S. G. Donald. On the asymptotic properties of LDU-based tests of the rank of a matrix. *Journal of the American Statistical Association*, 91(435):1301–1309, 1996.
- S. G. Donald, N. Fortuna, and V. Pipiras. On rank estimation in symmetric matrices: the case of indefinite matrix estimators. *Econometric Theory*, 23(6):1217–1232, 2007.
- M. L. Eaton and D. E. Tyler. On Wielandt’s inequality and its application to the asymptotic distribution of the eigenvalues of a random symmetric matrix. *The Annals of Statistics*, 19(1): 260–271, 1991.
- R. Engle and C. Granger. Co-integration and error correction: Representation, estimation, and testing. *Econometrica*, 55(2):251–76, 1987.
- L. Gill and A. Lewbel. Testing the rank and definiteness of estimated matrices with applications to factor, state-space and ARMA models. *Journal of the American Statistical Association*, 87 (419):766–776, 1992.
- C. Granger. Some properties of time series data and their use in econometric model specification. *Journal of Econometrics*, 16(1):121–130, 1981.
- E. J. Hannan. *Multiple Time Series*. Wiley series in probability and statistics: Probability and statistics section series. Wiley, 1970.
- F. Hayashi. *Econometrics*. Princeton University Press, 2011.
- D. Holden and R. Perman. *Unit Roots and Cointegration for the Economist*, pages 47–112. Palgrave Macmillan UK, London, 1994.
- S. Johansen. Statistical analysis of cointegration vectors. *Journal of Economic Dynamics and Control*, 12(2):231–254, 1988.
- S. Johansen. Estimation and hypothesis testing of cointegration vectors in Gaussian vector autoregressive models. *Econometrica*, 59(6):1551–1580, 1991.
- I. T. Jolliffe. *Principal Component Analysis*. Springer Verlag, 1986.
- F. Kleibergen and R. Paap. Generalized reduced rank tests using the singular value decomposition. *Journal of Econometrics*, 133(1):97–126, 2006.
- C. Lam and Q. Yao. Factor modeling for high-dimensional time series: Inference for the number of factors. *The Annals of Statistics*, 40(2):694–726, 2012.
- G. S. Maddala and I.-M. Kim. *Unit Roots, Cointegration, and Structural Change*. Cambridge University Press, 1999.
- J. Magnus and H. Neudecker. *Matrix Differential Calculus with Applications in Statistics and Econometrics*. Wiley Series in Probability and Statistics. Wiley, second edition, 1999.

- B. Pfaff. *Analysis of Integrated and Cointegrated Time Series with R*. Springer Publishing Company, Incorporated, 2nd edition, 2008.
- P. C. B. Phillips and S. N. Durlauf. Multiple time series regression with integrated processes. *The Review of Economic Studies*, 53(4):473–495, 1986.
- J.-M. Robin and R. J. Smith. Tests of rank. *Econometric Theory*, 16(2):151–175, 2000.
- J. A. Ryan and J. M. Ulrich. *quantmod: Quantitative Financial Modelling Framework*, 2018. URL <https://CRAN.R-project.org/package=quantmod>. R package version 0.4-13.
- R. J. Samworth, T. Wang, and Y. Yu. A useful variant of the Davis-Kahan theorem for statisticians. *Biometrika*, 102(2):315–323, 2014.
- P. K. Sen. Asymptotic normality of sample quantiles for m -dependent processes. *The Annals of Mathematical Statistics*, 39(5):1724–1730, 1968.
- R. R. Sundararajan and M. Pourahmadi. Stationary subspace analysis of nonstationary processes. *Journal of Time Series Analysis*, 39(3):338–355, 2018.
- R. R. Sundararajan, V. Pipiras, and M. Pourahmadi. Stationary subspace analysis of nonstationary covariance processes: eigenstructure description and testing. *Preprint*, 2019.
- D. E. Tyler. Asymptotic inference for eigenvectors. *The Annals of Statistics*, 9(4):725–736, 1981.
- P. Von Bünau, F. C. Meinecke, F. C. Király, and K.-R. Müller. Finding stationary subspaces in multivariate time series. *Physical Review Letters*, 103(21):214101, 2009.

Marie-Christine Düker
 Faculty of Mathematics
 Ruhr-Universität Bochum
 Universitätsstr. 150, IB
 44780 Bochum, Germany
Marie-Christine.Dueker@rub.de

Vladas Pipiras
 Dept. of Statistics and Operations Research
 UNC at Chapel Hill
 CB#3260, Hanes Hall
 Chapel Hill, NC 27599, USA
pipiras@email.unc.edu

Raanju R. Sundararajan
 Statistics Program
 King Abdullah University of Science and Technology
 Thuwal, Saudi Arabia
raanju.sundararajan@kaust.edu.sa